

TB Immune Correlates of Protection (continued)

A/Prof Elisa Nemes



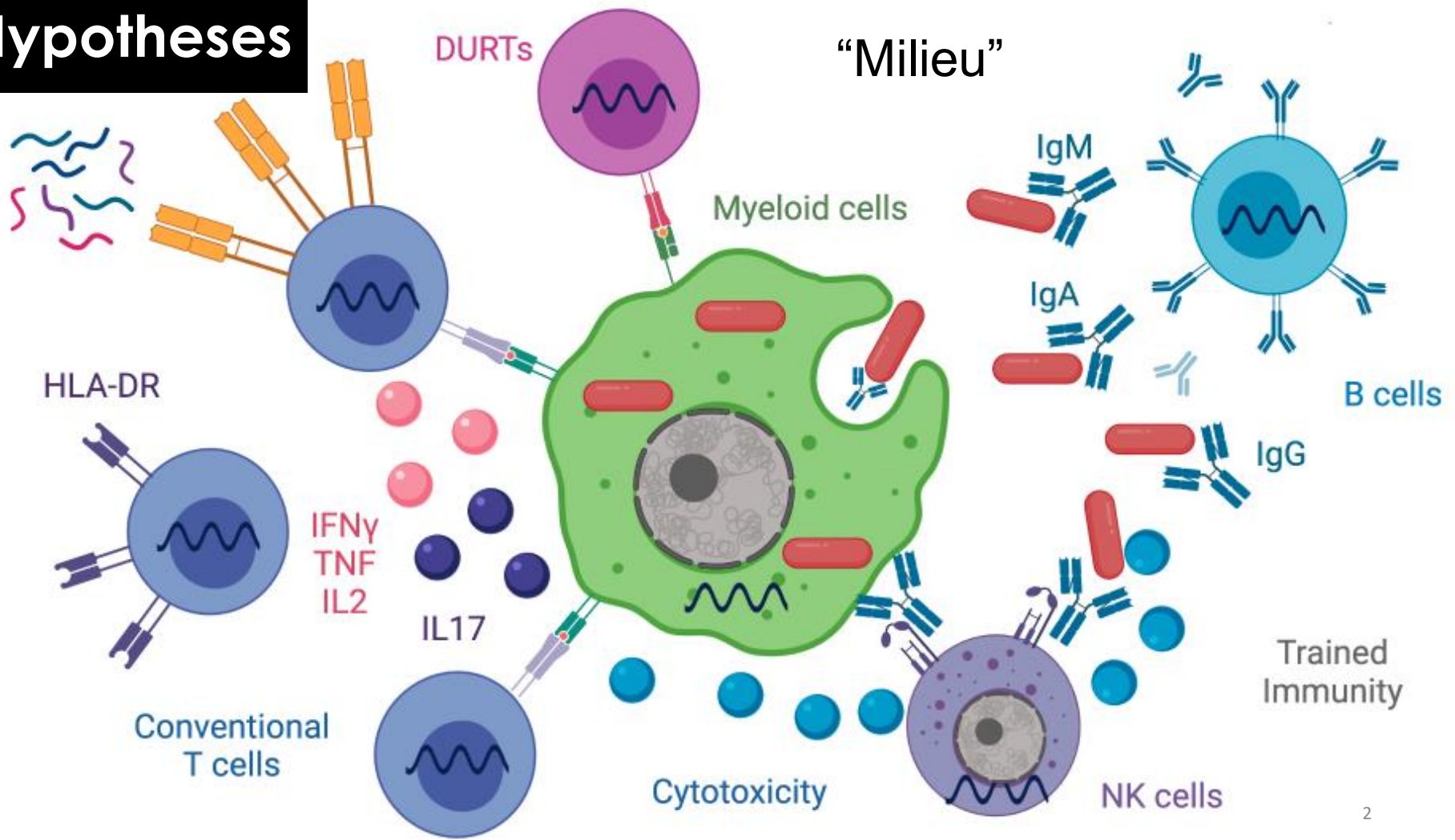
SOUTH AFRICAN
TUBERCULOSIS VACCINE INITIATIVE

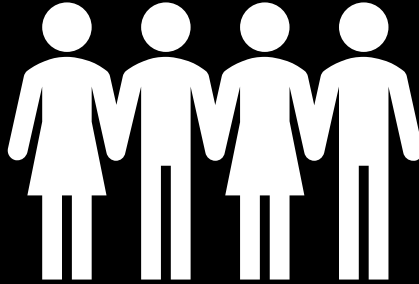
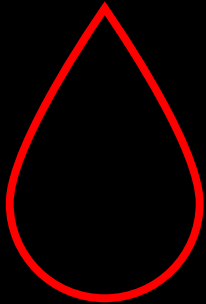
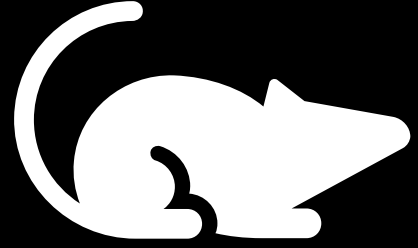
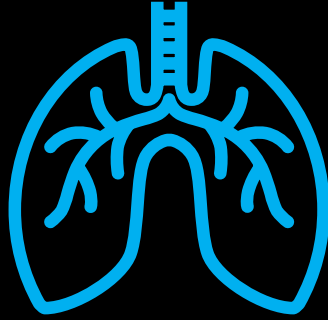
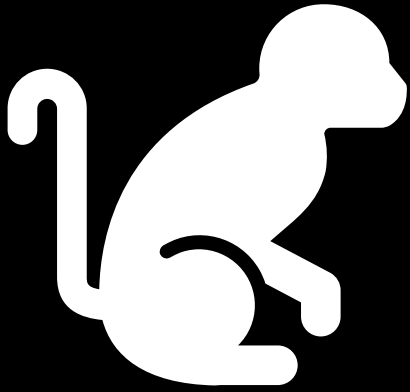


INSTITUTE OF INFECTIOUS DISEASE
AND MOLECULAR MEDICINE



Hypotheses





Samples

BCG



D7

D70



M72



D37



D0, D70, M6 (2 vials!)
D0, D37, M6 (6 vials)



PBMCs



Plasma

D0, D70, M6
D0, D37, M6

D0, D7 (BCG) or D3 (PI), M6
D0, D37, M6



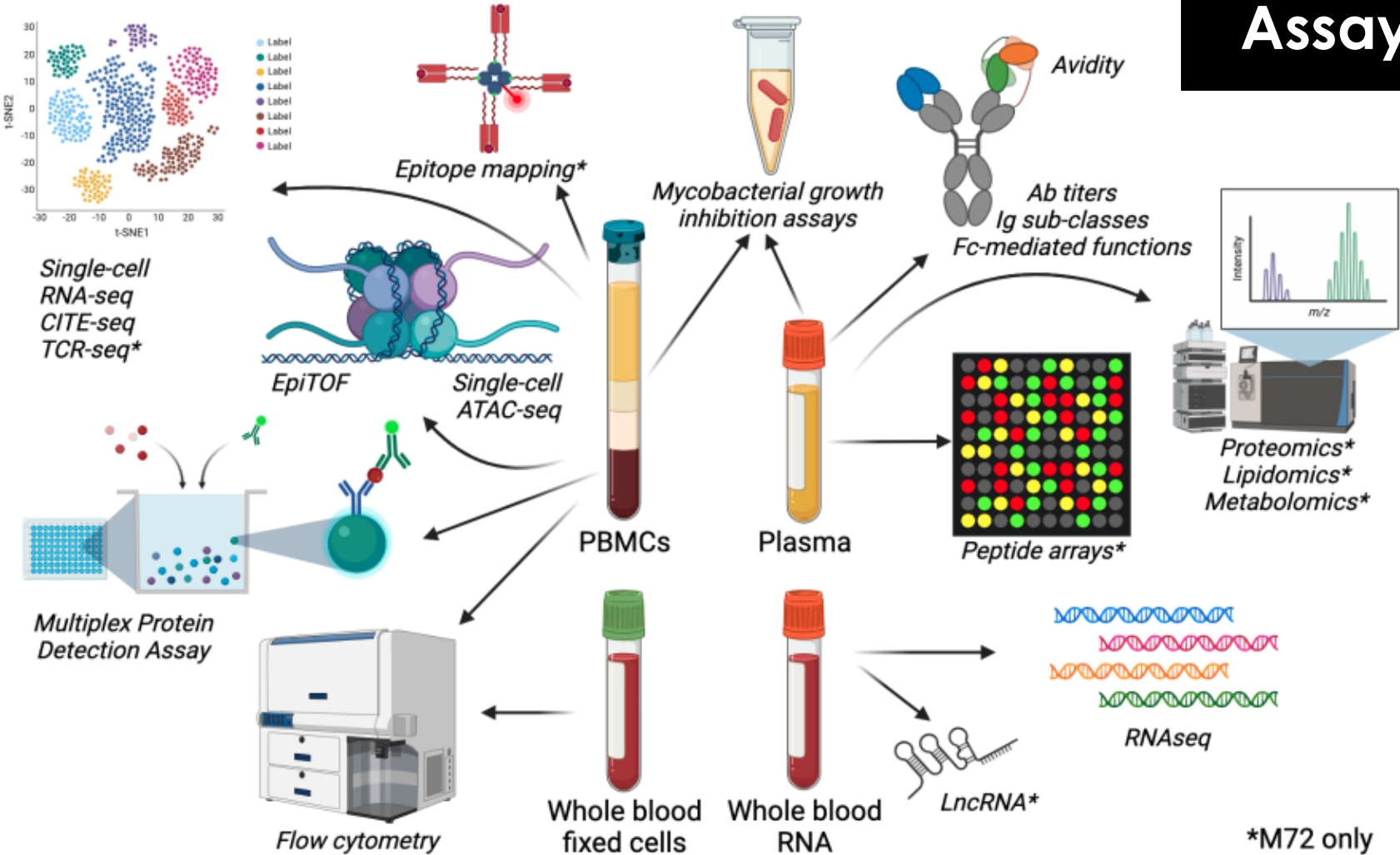
Whole blood
fixed cells



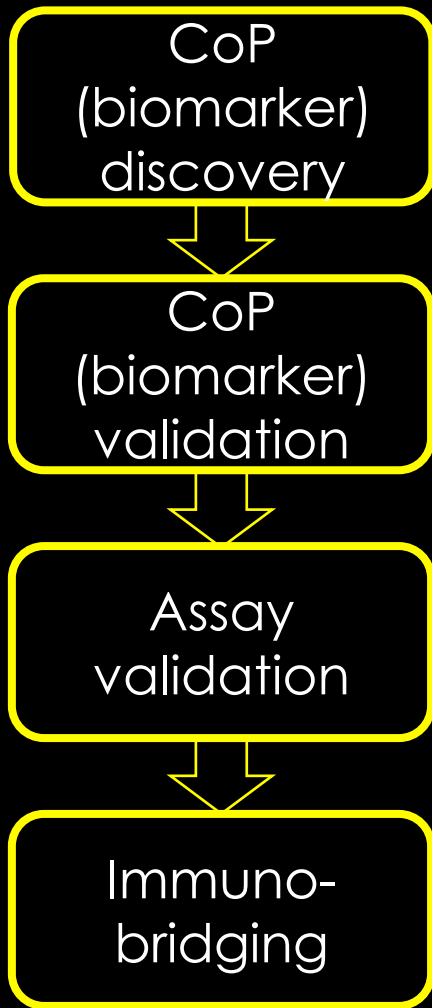
Whole blood
RNA

D0, D7 (BCG) or D3 (PI), M6
D0, D37, M6

Assays



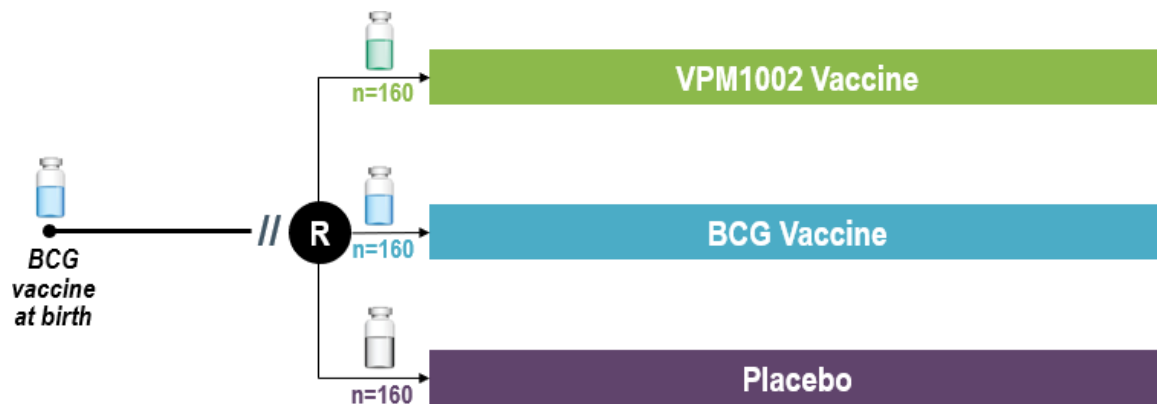
*M72 only



What do we do in the meantime???

- Prepare for success!
- Develop the models
- Collect the samples

Safety and immunogenicity RCT in 10–14-year-olds

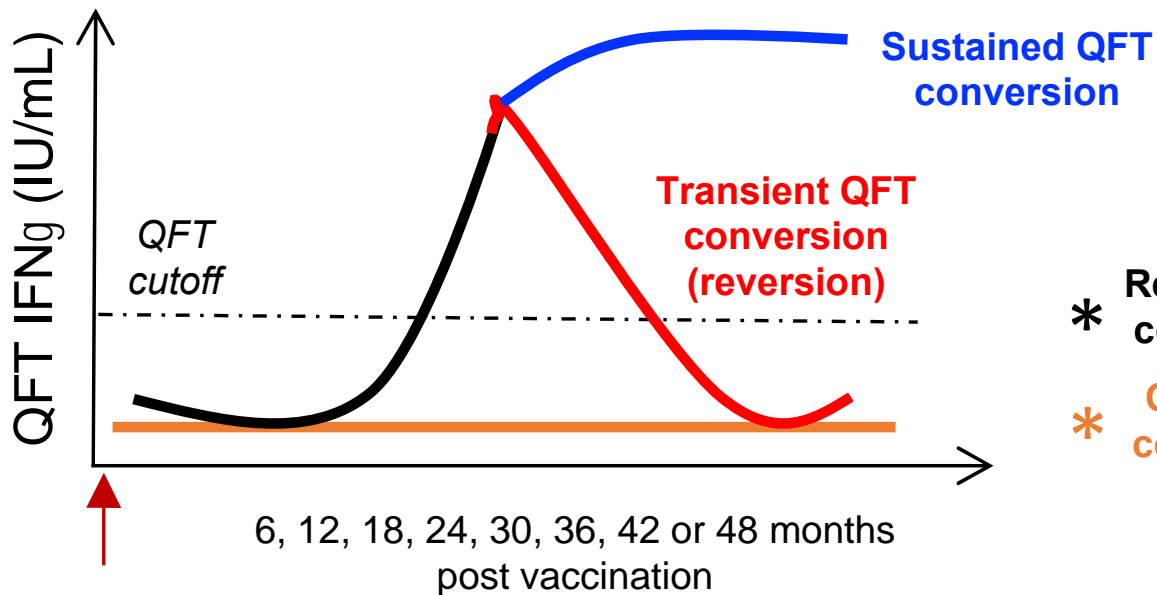


Sample Size N=480

With HIV		Without HIV		Total
IGRA-	IGRA+	IGRA-	IGRA+	
40	40	40	40	160
40	40	40	40	160
40	40	40	40	160
120	120	120	120	480

Weeks	0	1	4	10	24	48
PBMC & Plasma	X	X	X	X	X	X
WB RNA	X	X	X	X		
WB fixed cells	X	X	X	X		
Serum	X	X	X	X	X	X

BAL sampling in BCG REVAX



* Recent QFT converters

* QFT non-converters



n=60



n=60

n=40

n=60

- * Recruited within 4 weeks of INITIAL QFT conversion
- * Recruited at ANY visit, once >18 years old

Clinical
team

Participants



Funders &
Collaborators